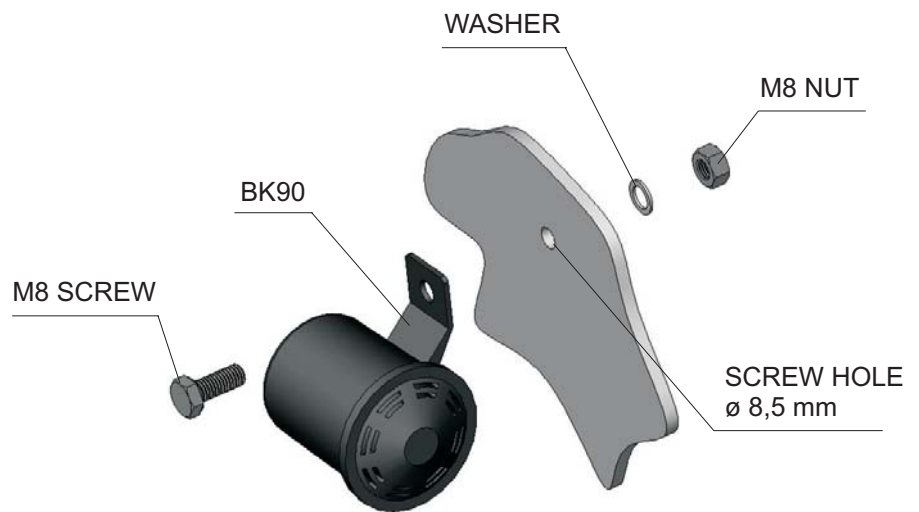
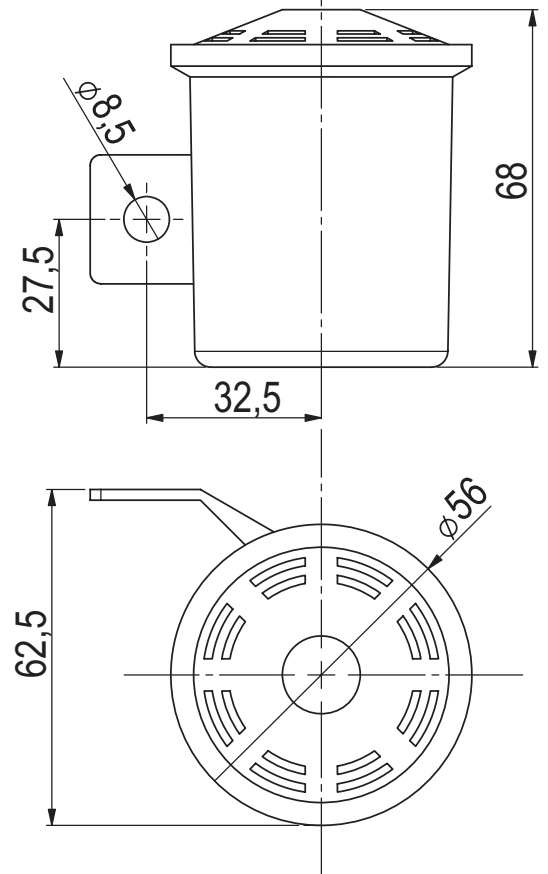
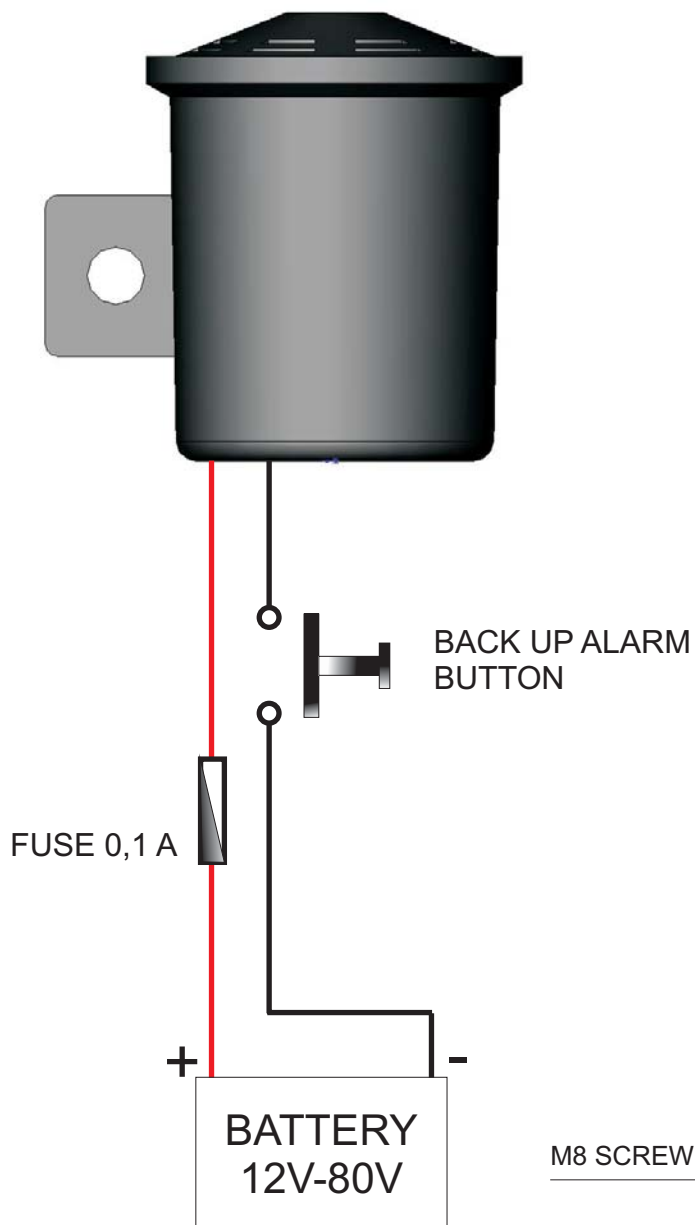


WIRING DIAGRAM



TECHNICAL DATA SHEET

RATED VOLTAGE	12 V - 80 V
SPL @ 2 METERS	85 dB(A)
BUZZER FREQUENCY	3000 +/- 500 Hz
OPERATING TEMPERATURE	- 20°C + 60°C
CURRENT CONSUMPTION	30 mA
PULSE RATE	1 Hz +/- 30%

INSTALLATION

Connect the terminals of the BK90 with the battery as shown into the wiring diagram.

Steps to fix the BK90 onto the vehicle:

- 1) Drill an 8,5 mm diameter hole into the supporting surface of the BK90.
- 2) Fix the BK90 with a M8 screw, a washer and a M8 nut.

Please note.

Mount the BK90 in a dry area, away from squirts of water.